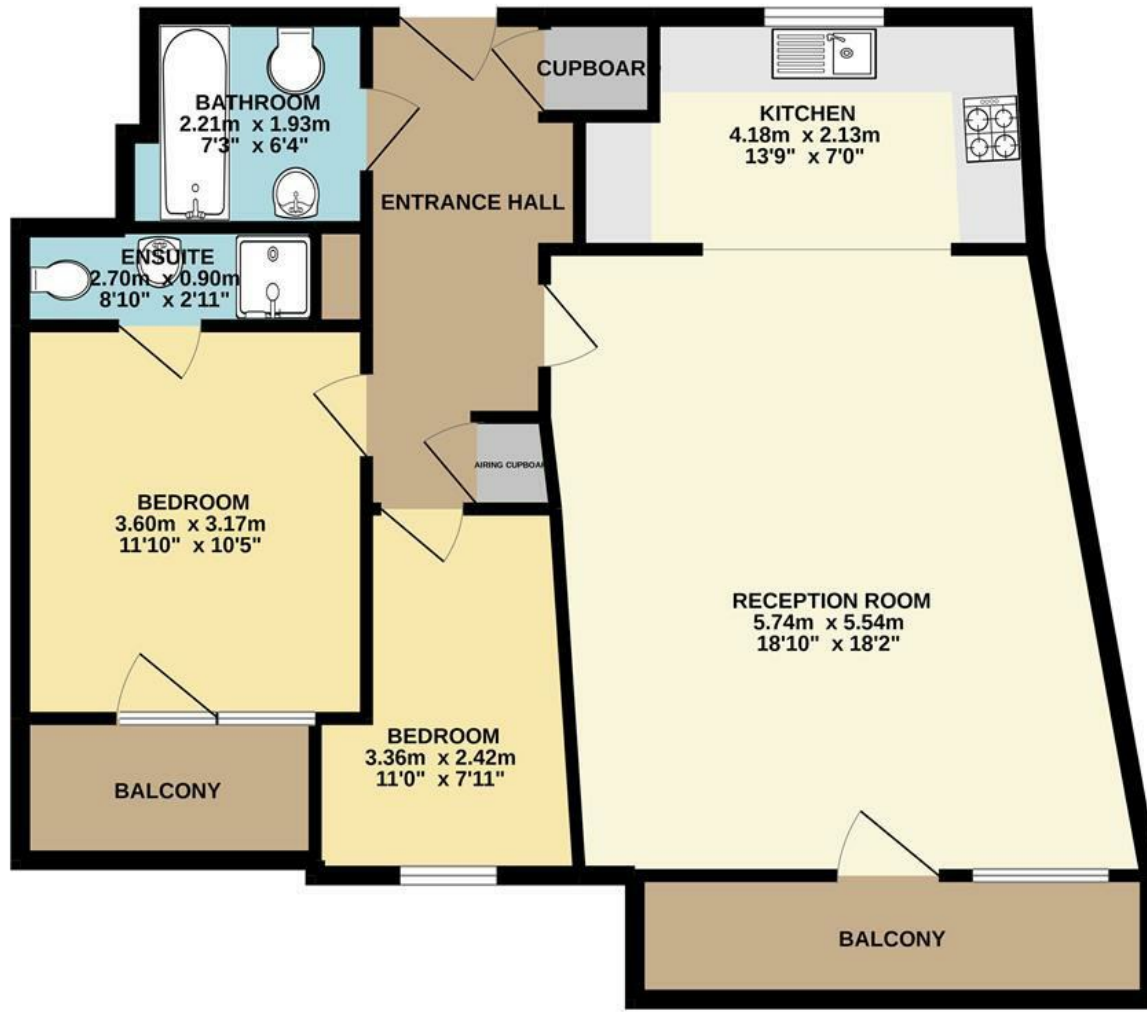


GROUND FLOOR  
78.9 sq.m. (850 sq.ft.) approx.



Energy Efficiency Rating		Current	Potential
Very energy efficient - lower running costs			
(92 plus)	A		
(81-91)	B		
(69-80)	C		
(55-68)	D		
(39-54)	E		
(21-38)	F		
(1-20)	G		
Not energy efficient - higher running costs			
<b>England &amp; Wales</b>		EU Directive 2002/91/EC	

Disclaimer – In accordance with the Property Misdescriptions Act, the company gives notice that all descriptions, references to condition, necessary permissions for use and other details are given in good faith and believed to be correct, but any intending lessees do not rely on them as statements of fact, but must satisfy themselves by inspection or other means, as to their accuracy.

TOTAL FLOOR AREA : 78.9 sq.m. (850 sq.ft.) approx.

Whilst every attempt has been made to ensure the accuracy of the floorplan contained here, measurements of doors, windows, rooms and any other items are approximate and no responsibility is taken for any error, omission or mis-statement. This plan is for illustrative purposes only and should be used as such by any prospective purchaser. The services, systems and appliances shown have not been tested and no guarantee as to their operability or efficiency can be given.  
Made with Metroplan ©2022



Duke Street | Norwich | NR3  
Offers In Excess Of £210,000



abbotFox presents this generous, two bedroom apartment. Offered to the market with no onward chain, this apartment occupies a prime position overlooking the River Wensum, with Norwich City Centre within a short walk. Accommodation comprises, generous open plan living, fitted kitchen, two bedrooms and a bathroom. With the property also offering two, private balconies and allocated parking, an internal viewing comes highly recommended.

